

We request your cooperation in sorting recyclable items and waste thoroughly, taking into consideration the global environment and increasing the usable span of waste disposal sites (landfills).

**Burnables**

Set out on  -day morning by

**Kitchen garbage**



Drain liquid thoroughly.

**Wastepaper**



Tissue and photos

**Paper diapers**



Clean out thoroughly.

**Pruned branches**



Cut to length of 50 cm or less.

**Clothes**

(Preferably set out as recyclable items.)

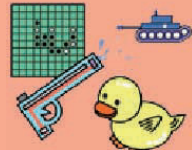


\*Clothes are collected at "Stockyard", etc.

**New Plastic items etc.**



Cassette tapes, video tapes and cases



Toys



\*CDs, DVDs and cases



Difficult to clean plastic containers



Polyethylene tanks and buckets (30 cm or less)

**New Leather, rubber products etc.**



Bags, purses and shoes



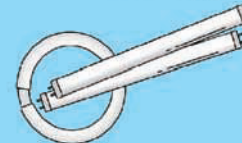
Hoses and rubber boots

**Non-burnables**

Set out on

-day morning by

**Glass, metal, ceramics, fluorescent lights and similar products**



(Put items in cases.)

**Spray cans**



Empty completely.

**Do not pierce them. It is dangerous to do so!**

**Plastic mark**

Set out on  -day morning by **8:00**



Set out items labeled with a plastic mark (plastic containers and packaging).

\*Set out styrofoam trays for food (items breakable when folded) on the recyclable item days.



Empty containers, rinse them lightly with water and drain thoroughly. In addition thoroughly remove any residue.

Note, however, that **difficult to clean items should be set out as burnable waste.**



Put in transparent or semi-transparent bags and place at the collection site on the day for recyclable items and waste.

Put all items labeled with a plastic mark in the same bag.

\*In addition to items listed on the right, include empty shampoo bottles or similar bottles, nets for vegetables, fruits, or similar netting and caps for bottles, etc.

**Bags for sweets, frozen food, etc.**



**Trays for takeout lunches and prepared foods, etc.**



**Plastic packages for eggs, fruits, etc.**



**Recyclable items**

Set out on  -day morning by **8:00**

Put recyclable items (except waste paper) from enterprises in transparent or semi-transparent bags.

**Waste paper etc.**

\*Bundle the same type of paper together with a string.



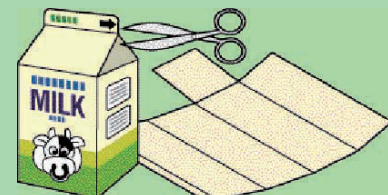
Newspapers (Including newspaper inserts)



Magazines (Paper boxes etc. are OK.)



Cardboard



Beverage cartons of 500 ml or more (Cut them open.)

\*Except aluminum foil lined cartons. (Remove the plastic taps, if any.)

**Bottles and cans**

•Only household item containers!



**Styrofoam trays for food**



Trays for food

Wash and put them into the specified nets.

**PET bottles**

Remove the caps and labels and set the items out on the "plastic mark" collection day.



Crush and put them into the specified nets.



PET bottles

**\*All recyclable items and waste from enterprises will be collected at a charge. Attach disposal charge tickets appropriately.**

\*For oversized items, contact the Oversized Waste Reception Center (TEL: 5296-7000). For oversized items from enterprises, please call and we will introduce private collectors.

# Collection schedule for recyclable items and waste

Recyclable items and waste are collected on public holidays except Sunday. They are collected on rainy days as well. Set out by the predetermined time on the day of collection. On public holidays and at the year-end and during the New Year holidays, set out recyclable items and waste by 8:00 am on the collection day. Oversized items from households are collected on request. Oversized items from enterprises, basically, are to be properly disposed responsibly at the enterprise's discretion and expense.

地域	プラ	資源	可燃	不燃	粗大	地域	プラ	資源	可燃	不燃	粗大
District	Plastic	Recyclable items	Burnable items	Non-burnable items	Over-sized items	District	Plastic	Recyclable items	Burnable items	Non-burnable items	Over-sized items
イ 飯田橋一丁目～四丁目 Iidabashi 1-4 chome	Wed.	Sat.	Tue.・Fri.	Mon.	Mon.	カ 神田錦町三丁目(下記番地を除く) Kanda-Nishikicho 3 chome (Except in the following districts)	Tue.	Fri.	Mon.・Thu.	Wed.	Thu.
一番町 Ichibancho	Mon.	Thu.	Wed.・Sat.	Fri.	Tue.	神田錦町三丁目3・5・7・9・11・17・19・20・22・24・26・28番地	Mon.	Thu.	Wed.・Sat.	Fri.	Thu.
岩本町一丁目～三丁目 Iwamotocho 1-3 chome	Fri.	Tue.	Mon.・Thu.	Sat.	Fri.	Kanda-Nishikicho 3 chome 3・5・7・9・11・17・19・20・22・24・26・28 banchi					
ウ 内神田一丁目～三丁目 Uchi-kanda 1-3 chome	Tue.	Fri.	Mon.・Thu.	Wed.	Thu.	神田西福田町 Kanda-Nishifukudacho	Tue.	Fri.	Mon.・Thu.	Wed.	Fri.
カ 鍛冶町一丁目～二丁目 Kajicho 1-2 chome	Tue.	Fri.	Mon.・Thu.	Wed.	Fri.	神田練塚町 Kanda-Neribeicho	Fri.	Tue.	Mon.・Thu.	Sat.	Fri.
震が関三丁目 Kasumigaseki 3 chome	Thu.	Mon.	Wed.・Sat.	Tue.	Tue.	神田花岡町 Kanda-Hanaokacho	Fri.	Tue.	Mon.・Thu.	Sat.	Fri.
神田相生町 Kanda-Ajoicho	Fri.	Tue.	Mon.・Thu.	Sat.	Fri.	神田東紺屋町 Kanda-Higashikonyacho	Tue.	Fri.	Mon.・Thu.	Wed.	Fri.
神田淡路町一丁目～二丁目 Kanda-Awajicho 1-2 chome	Sat.	Wed.	Tue.・Fri.	Thu.	Thu.	神田東松下町 Kanda-Higashimatsushitacho	Tue.	Fri.	Mon.・Thu.	Wed.	Fri.
神田和泉町 Kanda-Izumicho	Fri.	Tue.	Mon.・Thu.	Sat.	Fri.	神田平河町 Kanda-Hirakawacho	Fri.	Tue.	Mon.・Thu.	Sat.	Fri.
神田岩本町1・15番地 Kanda-Iwamotocho 1&15 banchi	Fri.	Tue.	Mon.・Thu.	Sat.	Fri.	神田松永町 Kanda-Matsunagacho	Fri.	Tue.	Mon.・Thu.	Sat.	Fri.
神田岩本町2・4番地 Kanda-Iwamotocho 2 & 4 banchi	Tue.	Fri.	Mon.・Thu.	Wed.	Fri.	神田美倉町 Kanda-Mikuracho	Tue.	Fri.	Mon.・Thu.	Wed.	Fri.
神田小川町一丁目～三丁目(奇数番地) Kanda-Ogawamachi 1-3 chome (odd-numbered banchi only)	Tue.	Fri.	Mon.・Thu.	Wed.	Thu.	神田美土代町 Kanda-Mitoshirocho	Tue.	Fri.	Mon.・Thu.	Wed.	Thu.
神田小川町一丁目～三丁目(偶数番地) Kanda-Ogawamachi 1-3 chome (even-numbered banchi only)	Sat.	Wed.	Tue.・Fri.	Thu.	Thu.	キ 紀尾井町 Kioicho	Thu.	Mon.	Wed.・Sat.	Tue.	Tue.
神田鍛冶町三丁目 Kanda-Kajicho 3 chome	Tue.	Fri.	Mon.・Thu.	Wed.	Thu.	北の丸公園 Kitanomaru-Koen	Mon.	Thu.	Wed.・Sat.	Fri.	Mon.
神田北乗物町 Kanda-Kitanorimonochi	Tue.	Fri.	Mon.・Thu.	Wed.	Fri.	ク 九段北一丁目～四丁目 Kudan-Kita 1-4 chome	Wed.	Sat.	Tue.・Fri.	Mon.	Mon.
神田紺屋町 Kanda-Konyacho	Tue.	Fri.	Mon.・Thu.	Wed.	Fri.	九段南一丁目・三丁目～四丁目 Kudan-Minami 1, 3-4 chome	Mon.	Thu.	Wed.・Sat.	Fri.	Mon.
神田佐久間町一丁目～四丁目 Kanda-Sakumacho 1-4 chome	Fri.	Tue.	Mon.・Thu.	Sat.	Fri.	九段南二丁目(下記番地を除く) Kudan-Minami 2 chome (Except in the following districts)	Mon.	Thu.	Wed.・Sat.	Fri.	Mon.
神田佐久間河岸 Kanda-Sakumagashi	Fri.	Tue.	Mon.・Thu.	Sat.	Fri.	九段南二丁目1番4～35号 Kudan-Minami 2 chome 1 ban 4-35	Mon.	Thu.	Wed.・Sat.	Fri.	Tue.
神田神保町一丁目～三丁目(奇数番地) Kanda-Jimbocho 1-3 chome (odd-numbered banchi only)	Mon.	Thu.	Wed.・Sat.	Fri.	Wed.	コ 麴町一丁目～六丁目 Kojimachi 1-6 chome	Thu.	Mon.	Wed.・Sat.	Tue.	Tue.
神田神保町一丁目～二丁目(偶数番地) Kanda-Jimbocho 1-2 chome (even-numbered banchi only)	Sat.	Wed.	Tue.・Fri.	Thu.	Wed.	五番町 Gobancho	Mon.	Thu.	Wed.・Sat.	Fri.	Tue.
神田神保町三丁目(偶数番地) Kanda-Jimbocho 3 chome (even-numbered banchi only)	Wed.	Sat.	Tue.・Fri.	Mon.	Wed.	サ 猿楽町一丁目～二丁目 Sarugakucho 1-2 chome	Sat.	Wed.	Tue.・Fri.	Thu.	Wed.
神田須田町一丁目1・3・5・9・11・13・15・17・19・21・23・25番地 Kanda-Sudacho 1 chome 1・3・5・9・11・13・15・17・19・21・23・25 banchi	Sat.	Wed.	Tue.・Fri.	Thu.	Thu.	三番町 Sanbancho	Mon.	Thu.	Wed.・Sat.	Fri.	Tue.
神田須田町一丁目7番地 Kanda-Sudacho 1 chome 7 banchi	Fri.	Tue.	Mon.・Thu.	Sat.	Thu.	ソ 外神田一丁目1～11番地・二丁目～三丁目・六丁目 Soto-Kanda 1 chome 1-11 banchi, 2, 3 & 6 chome	Sat.	Wed.	Tue.・Fri.	Thu.	Thu.
神田須田町一丁目(偶数番地) Kanda-Sudacho 1 chome (even-numbered banchi only)	Tue.	Fri.	Mon.・Thu.	Wed.	Thu.	外神田一丁目(1～11番地を除く)・四丁目～五丁目 Soto-Kanda 1 chome (except 1-11 banchi), 4-5 chome	Fri.	Tue.	Mon.・Thu.	Sat.	Thu.
神田須田町二丁目(奇数番地) Kanda-Sudacho 2 chome (odd-numbered banchi only)	Fri.	Tue.	Mon.・Thu.	Sat.	Fri.	ナ 永田町一丁目～二丁目 Nagatacho 1-2 chome	Thu.	Mon.	Wed.・Sat.	Tue.	Tue.
神田須田町二丁目(偶数番地) Kanda-Sudacho 2 chome (even-numbered banchi only)	Tue.	Fri.	Mon.・Thu.	Wed.	Fri.	ニ 西神田一丁目～二丁目 Nishi-Kanda 1-2 chome	Sat.	Wed.	Tue.・Fri.	Thu.	Wed.
神田駿河台一丁目～二丁目(奇数番地) Kanda-Surugadai 1-2 chome (odd-numbered banchi only)	Sat.	Wed.	Tue.・Fri.	Thu.	Wed.	西神田三丁目 Nishi-Kanda 3 chome	Wed.	Sat.	Tue.・Fri.	Mon.	Wed.
神田駿河台一丁目～二丁目(偶数番地) Kanda-Surugadai 1-2 chome (even-numbered banchi only)	Sat.	Wed.	Tue.・Fri.	Thu.	Thu.	二番町 Nibancho	Thu.	Mon.	Wed.・Sat.	Tue.	Tue.
神田駿河台三丁目～四丁目 Kanda-Surugadai 3-4 chome	Sat.	Wed.	Tue.・Fri.	Thu.	Thu.	ハ 隼町 Hayabusacho	Thu.	Mon.	Wed.・Sat.	Tue.	Tue.
神田多町二丁目 Kanda-Tacho 2 chome	Tue.	Fri.	Mon.・Thu.	Wed.	Thu.	ヒ 東神田一丁目～三丁目 Higashi-Kanda 1-3 chome	Fri.	Tue.	Mon.・Thu.	Sat.	Fri.
神田司町二丁目 Kanda-Tsukasamachi 2 chome	Tue.	Fri.	Mon.・Thu.	Wed.	Thu.	一ツ橋一丁目 Hitotsubashi 1 chome	Mon.	Thu.	Wed.・Sat.	Fri.	Mon.
神田富士山町 Kanda-Tomi Yamacho	Tue.	Fri.	Mon.・Thu.	Wed.	Fri.	一ツ橋二丁目 Hitotsubashi 2 chome	Mon.	Thu.	Wed.・Sat.	Fri.	Wed.
神田錦町一丁目～二丁目 Kanda-Nishikicho 1-2 chome	Tue.	Fri.	Mon.・Thu.	Wed.	Thu.	平河町一丁目～二丁目 Hirakawacho 1-2 chome	Thu.	Mon.	Wed.・Sat.	Tue.	Tue.
						富士見一丁目～二丁目 Fujimi 1-2 chome	Wed.	Sat.	Tue.・Fri.	Mon.	Mon.
						三崎町一丁目 Misakicho 1 chome	Sat.	Wed.	Tue.・Fri.	Thu.	Wed.
						三崎町二丁目～三丁目 Misakicho 2-3 chome	Wed.	Sat.	Tue.・Fri.	Mon.	Wed.
						四番町 Yonbancho	Mon.	Thu.	Wed.・Sat.	Fri.	Tue.
						六番町 Rokubancho	Thu.	Mon.	Wed.・Sat.	Tue.	Tue.

\*Contact the Refuse Collection Office for disposing large amounts of waste at one time due to relocation and the like.  
\*As for dangerous items (such as bamboo skewers, needles and glass) when setting out for collection, wrap them with thicker paper etc. and label the package with "danger".

## Oversized items [Items from enterprises will not be accepted.]

Items such as household furniture and bedding that are no longer needed will be collected. They should be approximately over 30 cm square and less than 1.8 m long. (A maximum of 10 items will be collected at a time.)

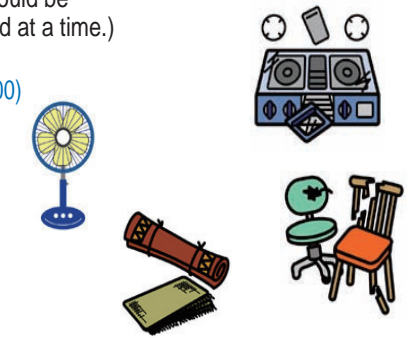
Sign up with the Oversized Waste Reception Center.

\*Oversized Waste Reception Center TEL: (5296)7000 (Monday to Saturday, 8:00 to 19:00)

\*Online application

<http://sodai.tokyokankyo.or.jp> (Available 24 hours a day)

- Sign up first, then attach Chiyoda Ward Oversized Waste Disposal Tickets for appropriate amount and set the items out on the scheduled date.
- Purchase charged Oversized Waste Disposal Tickets at any store or convenience store selling the tickets in the ward.



## Collection day for oversized items by branch office

Monday	Tuesday	Wednesday	Thursday	Friday
Fujimi	Kojimachi	Jimbocho	Kandakoen Manseibashi	Izumibashi

## Recycling of CRT-based televisions, refrigerators, freezers, washing machines, air conditioners

Recycling is required for these items by the Electric Appliance Recycling Law.

The items are not collected as oversized items.

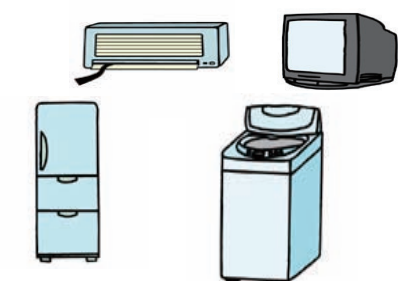
Inquire at the store where you bought the product or at the store where you will buy a new one.

- When you cannot contact the store where you bought the product due to relocation or other reason, contact the Home Appliance Recycling Reception Center after checking the name of the manufacturer.

TEL: (5296)7200 (Monday to Saturday, 8:00 to 17:00)

Pay the collection and transportation fee as well as the recycling fee.

(Commercial models are not accepted.)



## Recycling household personal computers

Recycling is required for household personal computers by the Law for the Promotion of Effective Utilization of Resources. The ward does not collect these items.

- Collection and recycling costs should be paid by those who want to dispose of the items.

- Recycling fees are set by each manufacturer. (For inquiries: contact the manufacturer's customer support center or appropriate department)

- If you do not know the name of the manufacturer, contact the PC3R Promotion Center (TEL: 03-5282-7685).

Or, apply for collection online at <http://www.pc3r.jp/uketsuke.html>



\*There is no charge for collection of personal computers with the "PC Recycling Mark" which have been sold since October, 2003.

(Contact the manufacturer regarding personal computers used at an enterprise.)

Stockyard・Collection Site List (Items from enterprises will not be accepted.)					
Used Clothes・Waste Cooking Oil・Waste Dry Battery	Recyclable items from households (Collected only at the Stockyards)	Sites with a ★ mark collect: waste paper, bottles, cans, styrofoam trays for food, PET bottles, used clothes, waste cooking oil and waste dry batteries. Sites with a ☆ mark do not collect waste paper, bottles and cans.	Site Name	Phone Number	Business Hours
			Used Clothes 	★ Beside the night entrance of the ward office (Bring used clothes and waste cooking oil to the Environment Promotion Section on the fifth floor)	3264-2111
Waste Cooking Oil 	★ Kojimachi Branch Stockyard	3263-3831	Monday to Friday, 8:30 to 17:15		
Waste Dry Battery 	★ Fujimi Branch Stockyard	3263-3841	*Besides the above, the offices of the Kumin Kaikan (Community Center) will accept the items, please contact them during business hours.		
	★ Kandakoen Branch Stockyard	3252-7691			
	★ Izumibashi Branch Stockyard	3253-4931			
	★ Nishi-Kanda Cosmos Kan Stockyard	5215-9065	Every day 7:00 to 22:00		
	☆ Chiyoda Refuse Collection Office	3251-0566	Monday to Friday, 7:40 to 17:00		
	☆ Chiyoda Refuse Collection Office Iidabashi Car Barn	5212-5081	Monday to Friday, 7:40 to 16:20		
	☆ Recycle Center Kamakurabashi	3253-1970	1st to 25th every month (except Monday), 10:00 to 18:00		
	☆ In front of the Yonbancho Library and the Historical Folk Museum entrances (Used clothes and waste cooking oil are not accepted.)	3238-1140	Every day		