

**Refuge.K (Pre-owned condo for sale | 78.86 sqm)**

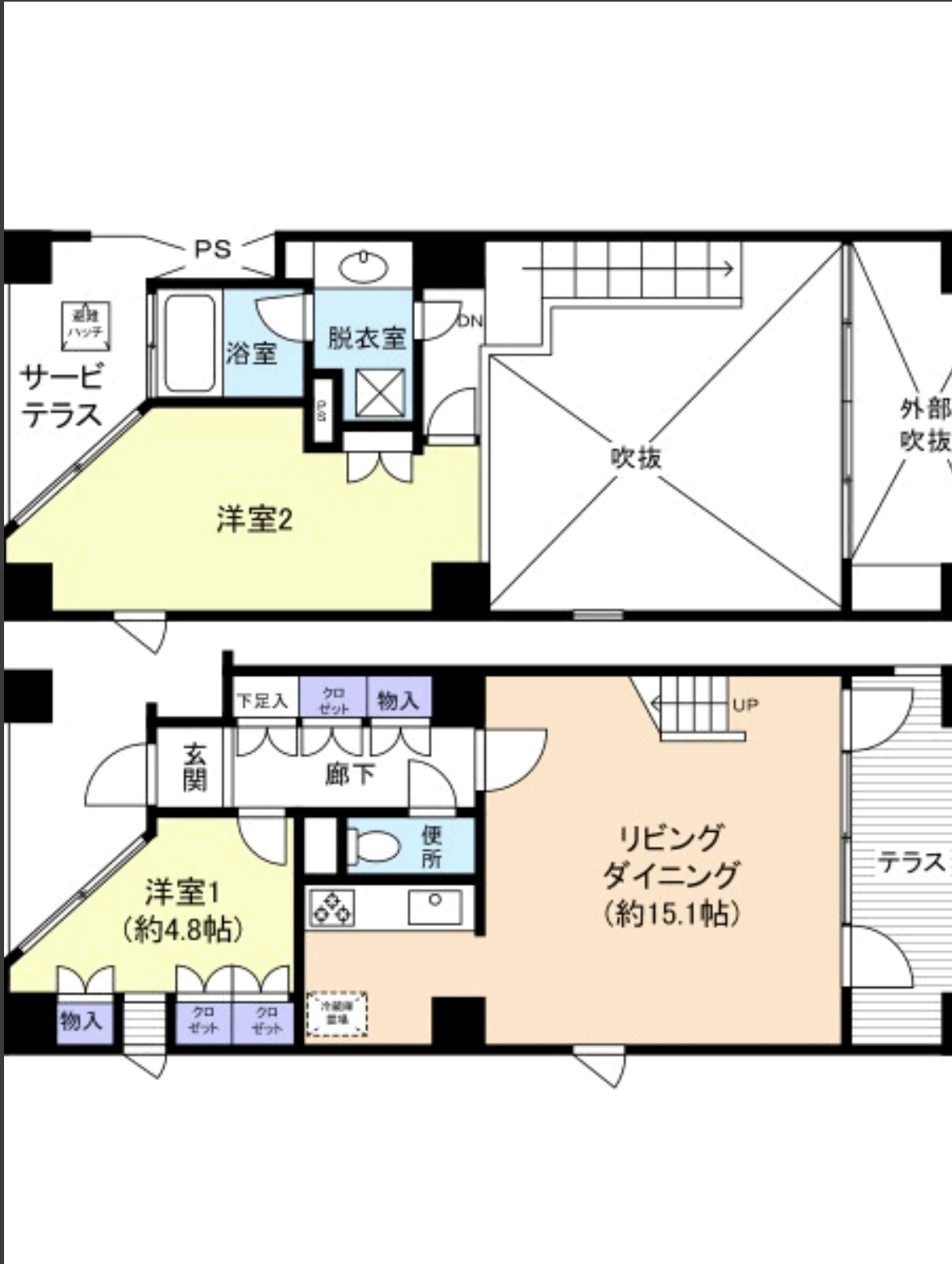
A designer-architect project in 2001.

15 units residential complex. All are two-storied.

Most unique part is its 5M high ceiling in the living-dining space. East side wall is all window, and the residents can view the Tokyo Bay by sitting in the living.

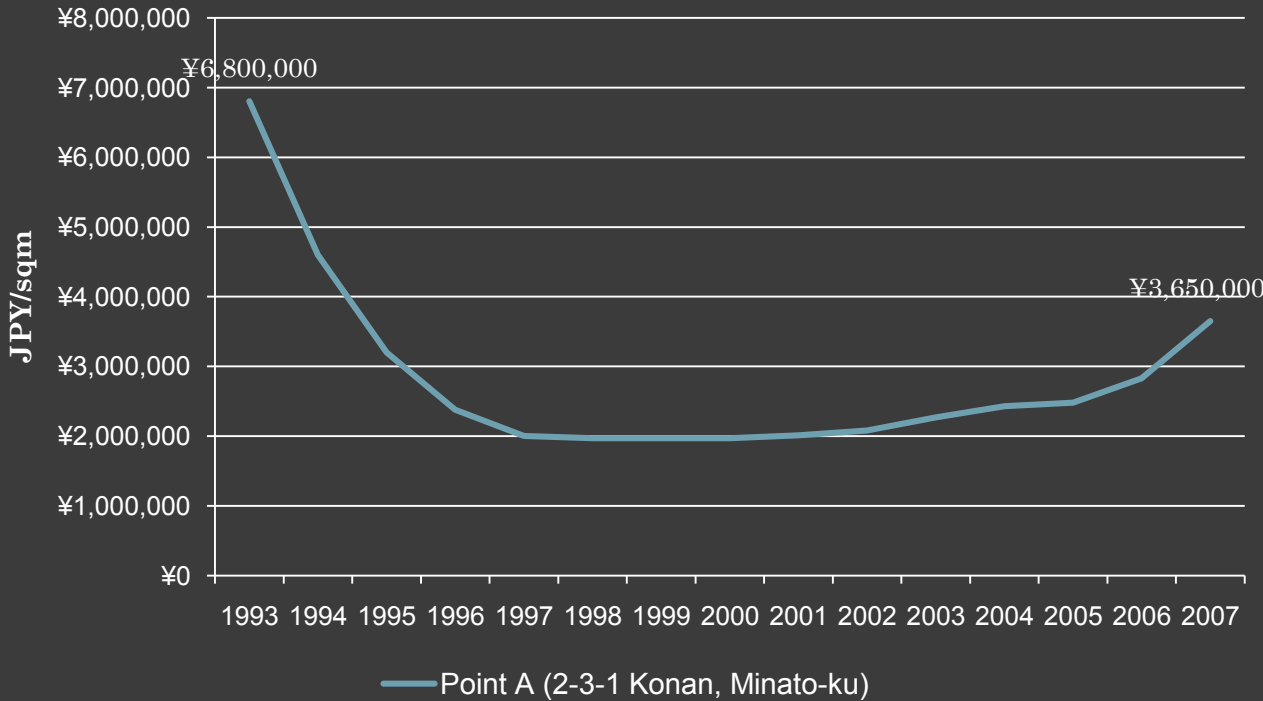
The location is in the industrial zoning and may not be so appropriate for family residents. All units are possessed by different individuals, either resided or rented out.

The unit for sale is at 3-4F and rented out to a tenant at JPY270,000.- (Rent plus JPY26,000.- Management Fee) GOI is 6.11% per year.



[Location by hybrid map](#)

**Land Price Index Change (2-chome Konan, Minato-ku)**



*There was no available data of 5-chome Konan. Data indicated is of 2-chome.*



